

A

B

C

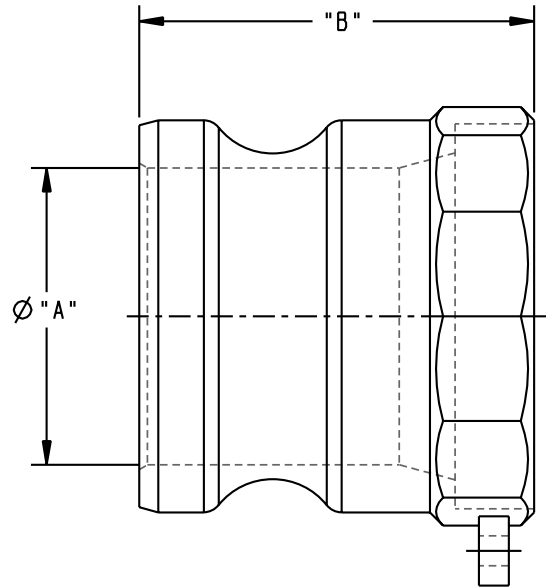
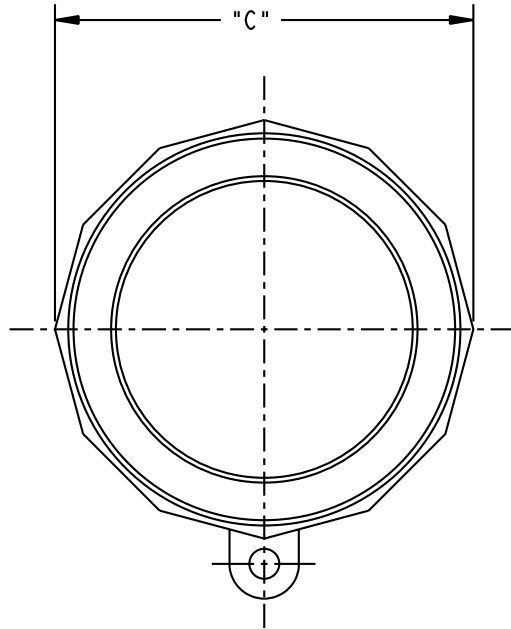
D

THIS DRAWING IS NOT TO BE SCALED. FOR ADDITIONAL INFORMATION. PLEASE CONTACT OUR ENGINEERING DEPT.

REVISIONS					
LTR	ECN #	DESCRIPTION	DRAWN	APPROVED	DATE
REL	-		JPR		08-27-03

1

1



2

2

3

3

633AW-SS40	3.84	3.19	5.56
633AW-SS30	2.88	2.78	4.31
633AW-SS25	2.19	2.75	3.47
633AW-SS20	1.88	2.44	2.62
633AW-SS15	1.44	2.12	2.25
633AW-SS12	1.15	1.97	2.06
633AW-SS10	0.94	1.91	1.69
633AW-SS07	0.78	1.50	1.38
ADAPTOR SIZE	"A"	"B"	"C"

NOTES:

1. MATERIAL: ASTM A351 - CF-8M (316) STAINLESS STEEL.

4

4

CONFIDENTIAL THIS DOCUMENT CONTAINS INFORMATION WHICH IS PROPRIETARY TO OPW, AND SHOULD BE PROTECTED ACCORDINGLY.

DESCRIPTION: SST KAMLOK ADAPTOR - SOCKET WELD

UNLESS OTHERWISE SPECIFIED
 TOLERANCES ON DIMENSIONS
 3 DECIMALS +/- 0.005
 2 DECIMALS +/- 0.015
 1 DECIMAL +/- 0.030
 ANGLES +/- 1/2 DEG
 MACHINED SURFACES 125 RMS MAX

SIGNATURES		MO-DA-YR
DRAWN:	JPR	09-05-01
CHECKED:		
MATERIAL:	WEIGHT:	

REV: REL	PART NUMBER:
SIZE: C	633AW
SCALE: NONE	SHEET 1 OF 1

OPW **Engineered Systems**
 A **DOVER** Resources Company
 Lebanon, Ohio 45036 USA

3D GENERATED DRAWING

A

B

C

D