

NGV 管线拉断阀 ILB-5



OPW ILB 系列管线拉断阀适用于氢能源车辆燃料供给操作，在不同的进口压力下都能可靠工作并能确保再发生生意外断开的情况时两侧阀门自动关闭，停止气体流动并保护加气设备免受破坏。

性能特点：

- ◆ 耐用、抗腐蚀的材质结构：不锈钢和特殊镀覆的钢材结构提高了在严酷环境条件下使用的耐用性和抗腐蚀能力。

- ◆ 可重新联接使用的设计结构： 各项组件可以重复使用，从而节约了维修费用。
- ◆ 新型的阀门系统： 这种管线切断装置中的密闭系统可最大限度地减少在发生车辆意外移动离开情况下泄放出来的气体量。
- ◆ 高流量/超快灌装能力： 这是 OPW 公司所能提供的最大流量的管线拉断阀。它能为大型油箱车辆提供快速加气。其内部密封件是专门设计以符合快速 NGV 加气的要求。
- ◆ 便于安装： 管线拉断阀中设计了 SAE-10 O 形圈，很容易安装到加油机和加气枪之间的管路中。
- ◆ 每件产品单独进行泄漏测试和检验，并附有可跟踪的系列号。
- ◆ 断开时拉断力 - 150 磅力 (668N)

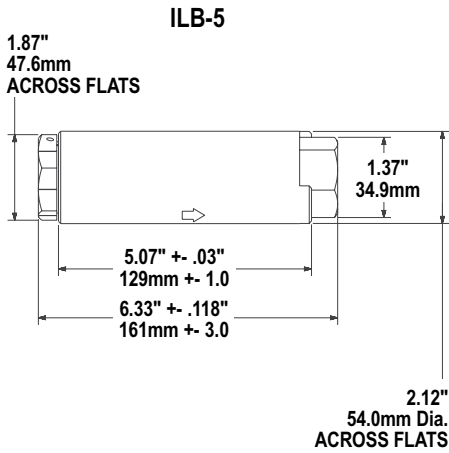
材料	
[阀体]	不锈钢
[内部构件]	不锈钢
[密封]	专用于高压 NGV 的特殊配方聚合物及橡胶材料
技术参数	
[最低流量]	5500 SCFM @ 3000 psid (压差为 20.67MPa 时, 155760 L/min)
[温度范围]	-40° F 到 250° F (-40° C 到 85° C)
[流量系数 (CV)]	3.3
[设计压力]	5000 psi(34.5MPa)
[重量]	5 lbs(2.26kg)

Product No.	Inlet Thread Size	Outlet Thread Size	Service Pressure		Weight
ILB-5	SAE - 10, 7/8" - 14 UNF (female)	SAE - 10, 7/8" - 14 UNF (female)	3,600 psi	250 bar	2.26 kg



OPW In-Line Breakaway (ILB-5) - Heavy-Duty Truck/Bus

OPW has developed an in-line breakaway that can be used in heavy-duty truck and bus NGV refueling applications. This unit will function consistently, independent of the inlet pressure.



Materials

Body: Stainless steel
Internal Components: Stainless steel
Seals: Specially formulated polymers and elastomers specific to high-pressure NGV applications.



Features

- ◆ **Durable, Corrosion-Resistant Construction** - stainless steel and specially plated steel construction provide improved durability and corrosion resistance in harsh environments.
- ◆ **Reconnectable Design** - allows the component to be reused, reducing maintenance costs.
- ◆ **Innovative Valve System** - the sealing system in this breakaway minimizes the amount of vent gas released during a drive-away incident.
- ◆ **High-Flow/Super Fast Fill Capacity** - this is OPW's fastest flowing breakaway. This breakaway will provide quick fueling of large storage vehicles. Internal seals are specifically designed to meet the demands of fast-fill NGV fueling.
- ◆ **Easy Installation** - the in-line breakaway has SAE-10 O-ring fittings for easy installation in line between the dispenser and nozzle.
- ◆ **Individually Inspected, Leak and Breakaway Tested, with Traceable Serial Numbers**
- ◆ **Disconnection Force** - 150 lbs. (668 N).

Specifications:

Min. Flow Rate: 5500 SCFM @ 3000 psid
 Temperature Range: -40° F to 185° F
 (-40° C to 85° C)
 Weight: 5 lbs. (2.26 kg)
 Cv: 3.6

Ordering Specifications

• Recommended to be used with the CC250, CC300, CC600 and CT1000 Series NGV-1 CNG Nozzles

Product No.	Inlet Thread Size	Outlet Thread Size	Max. Allowable Service Pressure	
ILB-5	SAE - 10, 7/8 - 14 UNF (female)	SAE - 10, 7/8 - 14 UNF (female)	4532 psi (P36)	312.5 bar